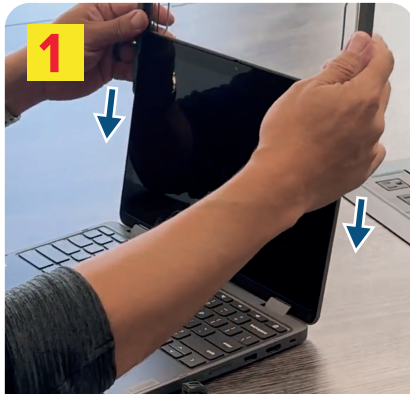


Extreme Shell-F3

NOTE: If you're using the optional hand strap, you may find it easier to add it before installing the case. To add the strap, thread it through the four cutouts found on both the top and bottom pieces.



Hold the top piece above the device screen and align the lip of the case with the device. Next, push down gently to slide the lip of the case around the sides of the screen. When you cannot slide it any further, the case is successfully attached.



Repeat the process for the bottom piece, sliding the device onto the case until it is completely on.



Locate the two clips on the back of the bottom piece. Pop them up to lock the case onto the device securely.